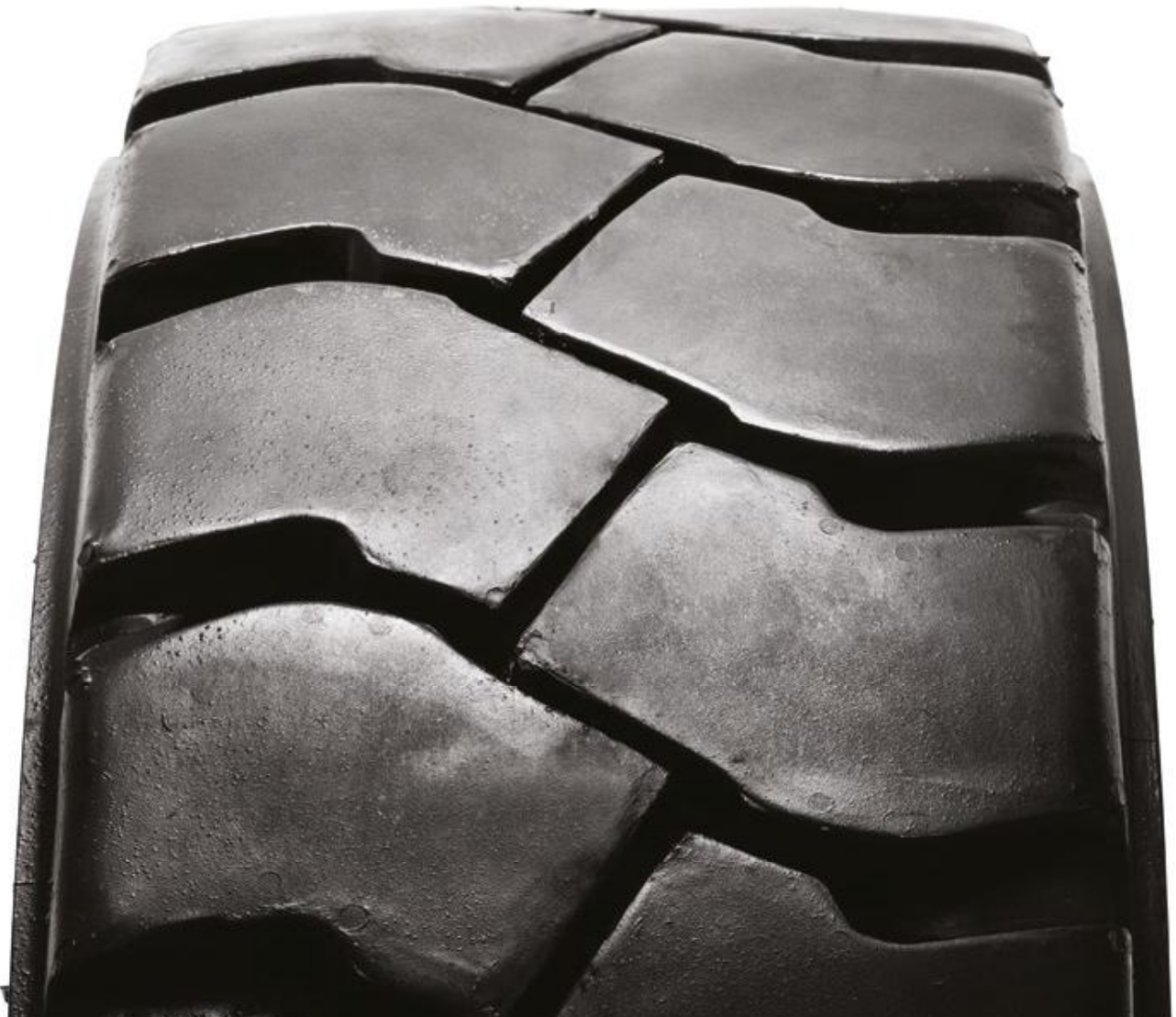


SOLIDEAL HAULER LT

BY CAMSO



INDUSTRIAL
PNEUMATIC



READY FOR YOUR CHALLENGES.

With a heavy-duty carcass and high abrasion-resistant tread, it delivers both incredible puncture resistance and long life. And with a reinforced sidewall for side impact protection, it's unstoppable.

camsco.co

PERFORMANCE

TIRE LIFE



PUNCTURE RESISTANCE



STABILITY



FORMERLY
CAMOPLAST
SOLIDEAL

INDUSTRIAL PNEUMATIC

SOLIDEAL HAULER LT

BY CAMSO

TIRE SIZE	PR	TUBE* & VALVE**	FLAP	RIM SIZE ⁽¹⁾		ACTUAL TIRE DIMENSIONS				INFLATION PRESSURE (bar)	LOAD INDEX & SPEED SYMBOL	LOAD CAPACITY ⁽²⁾ Counterbalanced lift trucks (kg)				
				Recommended	Alternative	Overall diameter (mm)	Section width (mm)	Original tread depth (mm)	Static loaded radius (mm)			Up to 25 km/h		Up to 35 km/h		
												Load wheel	Steering wheel	Load wheel	Steering wheel	
5.00-8 (5.70-8)	10	JS2	90-8	3.00D	3.25I/3.75I	460	132	14	209	10.00	111	A5	1415	1090	1365	1015
16x6-8 (150/75-8)	16	V3-02-05	130-8	4.33R	-	421	147	12	190	9.00	115	A5	1580	1215	1520	1130
18x7-8 (180/70-8)	16	V3-02-05	130-8	4.33R	5.00F	472	164	18	210	10.00	125	A5	2145	1650	2065	1535
6.00-9	10	JS2	125-9	4.00E	-	536	168	16	243	8.50	118	A5	1715	1320	1650	1230
6.00-9	12	JS2	125-9	4.00E	-	544	166	16	245	10.00	121	A5	1885	1450	1815	1350
21x8-9 (200/75-9)	16	JS2	180-9	6.00E	7.00E	546	198	19	240	10.00	134	A5	2755	2120	2650	1970
6.50-10	10	JS2	140-10	5.00F	5.50F	592	183	16	271	7.75	122	A5	1950	1500	1875	1395
6.50-10	14	JS2	140-10	5.00F	5.50F	595	180	16	268	10.00	128	A5	2340	1800	2250	1675
23x9-10 (225/75-10)	20	JS2	180-10	6.50F	-	579	235	15	261	10.00	142	A5	3445	2650	3315	2465
7.00-12	12	TR75A	135-12	5.00S	-	680	194	17	311	8.50	133	A5	2680	2060	2575	1915
7.00-12	14	TR75A	135-12	5.00S	-	680	195	17	310	9.00	134	A5	2755	2120	2650	1970
7.00-12	16	TR75A	135-12	5.00S	-	684	195	18	310	10.00	136	A5	2910	2240	2800	2085
23x10-12 (250/55-12)	16	JS2	210-12	8.00G	-	604	247	18	274	9.75	143	A5	3535	2725	3405	2535
27x10-12 (250/75-12)	24	V3-02-05	210-12	8.00G	-	674	249	22	305	9.00	152	A5	5525	4250	5315	3955
7.00-15	14	TR75A	180-15	5.50	5.00	734	190	22	334	9.00	141	A5	3350	2575	3220	2395
7.50-15	14	TR75A	180-15	6.00	5.50/6.50	781	212	20	356	9.25	144	A5	3640	2800	3500	2605
28x9-15 (8.15-15 & 225/75-15)	14	V3-02-08	180-15 HD	7.00	-	705	218	17	322	9.00	145	A5	3770	2900	3625	2695
8.25-15 (7.50-15(32))	14	TR77A	180-15	6.50	6.00/7.00	841	246	19	380	8.00	149	A5	4225	3250	4065	3025
8.25-15 (7.50-15(32))	16	TR77A	180-15	6.50	6.00/7.00	841	246	23	380	9.25	152	A5	4615	3550	4440	3300
8.25-15 (7.50-15(32))	18	TR77A	180-15	6.50	6.00/7.00	841	246	19	381	9.25	152	A5	4745	3650	4565	3395
250-15 (250/70-15)	16	TR77A	180-15 HD	7.50	7.00	743	226	19	337	8.25	150	A5	4355	3350	4190	3115
250-15 (250/70-15)	20	TR77A	180-15 HD	7.50	7.00	733	231	23	337	10.50	156	A5	5200	4000	5000	3720
28x12.5-15 (355/45-15)	24	V3-02-10	260-15	9.75	-	696	291	17	315	10.00	161	A5	6015	4625	5780	4300
300-15 (315/70-15)	18	TR78A	180-15 HD	8.00	-	850	278	25	384	8.00	161	A5	6015	4625	5780	4300
300-15 (315/70-15)	22	TR78A	180-15 HD	8.00	-	834	282	26	377	9.50	163	A5	6695	5150	6440	4790
32x12.1-15	24	TR78A	260-15	9.75	-	806	314	28	353	10.00	170	A5	7800	6000	7500	5580
315/85-15	20	TR78A	180-15 HD	7.50	-	908	290	26	397	9.50	172	A5	8190	6300	7875	5830
10.00-20	16	V3-02-14	200-20	7.50	7.00/8.00	1088	283	30	496	9.00	164	A5	6500	5000	6250	4650
11.00-20	16	V3-02-14	200-20	8.00	7.50/8.50	1089	302	32	507	9.00	167	A5	7085	5450	6815	5070
11.00-20	18	V3-02-14	200-20	8.00	7.50/8.50	1089	302	32	495	10.00	170	A5	7800	6000	7500	5580
12.00-20	20	V3-02-14	200-20	8.50	8.00/10.00	1150	317	36	517	10.00	175	A5	9230	7100	8875	6570
12.00-20	28	V3-02-14	200-20	8.50	8.00/10.00	1150	323	36	523	12.00	180	A5	10400	8000	10000	7440
14.00-24	28	V3-02-7	250-24	10.00	W/VA/WI	1364	371	50	623	10.00	11	188	12350	9500	11875	8790
16.00-25	32	TBLS	-	11.25/2.0	13.00/2.0	1472	421	55	664	10.00	195	A5	15795	12150	15190	11300

WIDE SQUARE TREAD PROFILE

- Provides superior stability

MASSIVE TREAD BLOCKS AND DEEP LUGS

- Extends service life in severe applications



WIDE SIDEWALL WITH RIM GUARD

- Provides best side impact resistance
- Three times thicker than standard tires

REINFORCED UNDERTREAD

- Increases puncture resistance

**AVAILABLE IN
NON-MARKING COMPOUND
UPON REQUEST**



Remarks

(1) Consult tire and wheel manufacturer for confirmation of the suitability of the tire/rim combination particularly with regard to rim profile and wheel strength.

(2) The speeds quoted in the table are the maximum speeds of the unloaded vehicle. An increase in load capacity for lower speeds is not permitted. Loads apply to cyclic service applications. Cyclic service means applications where tires are not used continuously at the load indicated by its Load Index and Speed Symbol. It does not refer to the length of time a vehicle is in use, but rather that there is a variation in load and/or speed.

* Tube size is identical to tire size.

** Table shows standard valves. Other valves on request.

NHS – Not for Highway Service: Tires primarily designed for use outside of public roads, but suitable for temporary/incidental use on public roads.

All tires come with tube and flap.

It is possible that certain items are not sold in your region.

Please contact your local sales contact to check tire availability in your region.

AUTHORIZED DISTRIBUTOR:



Camso is the best of Camoplast and Solideal.
To keep moving forward while staying true to our history,
we're now the Road Free company.

camso.co



FORMERLY
CAMOPLAST
SOLIDEAL